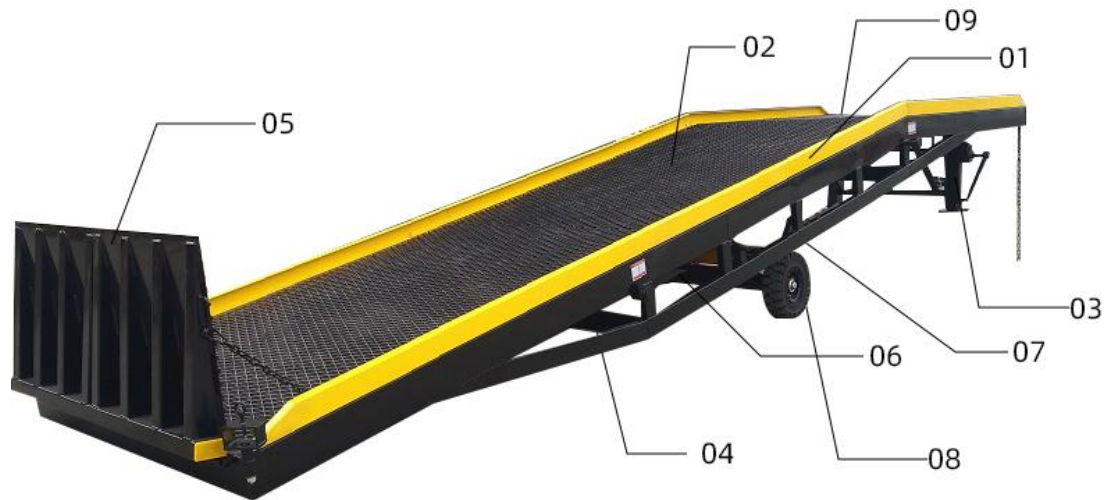


User Operation Manual



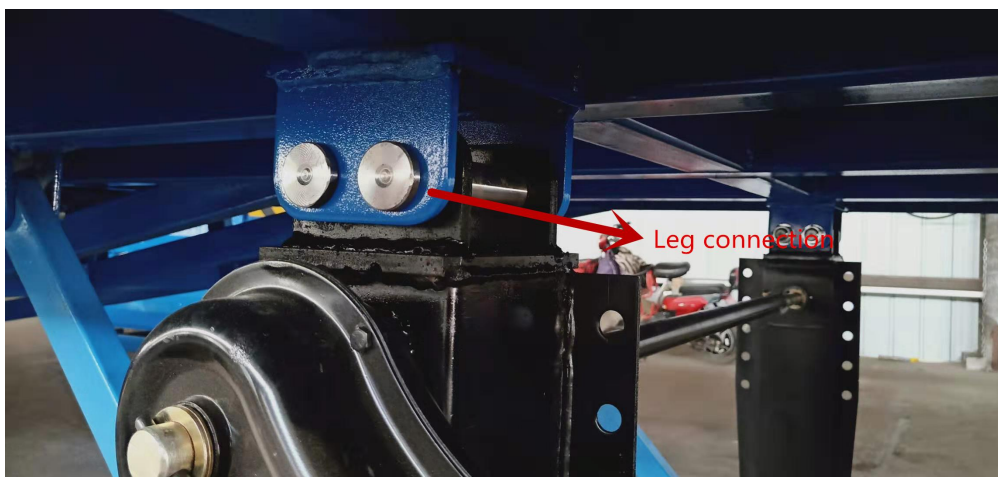
1 、 guardrail 2 、 High strength tooth checkered plate or checkered plate 3 、 leg
4 、 stopper 5 、 The tail plate 6 、 The hydraulic system 7 、 Oil cylinder 8 、 Solid
tyre 9 、 The tongue plate



1. Attach hook & tension chain 2. Check for ramp wheels



3. Hand control pump 4. Lowering valve



5. Leg connection



6. Diagonal support connection



7. Lateral connecting rod

Check the hydraulic system and tires carefully before using the equipment, no leakage or insufficient air pressure. Then the ramp can be operated at the time.

1. Tighten the oil return valve knob clockwise and press the handle to raise the boarding bridge higher than the car floor.
2. The vehicle in place.
3. Loosen the oil return valve knob (rotate counterclockwise), the axle is lowered and the tongue is flat. Stably connect to the rear of the vehicle and secure the boarding bridge to the car with a chain. At this point the hydraulic system is not stressed.
4. Raise the legs 50mm from the ground, depending on how many cars are loaded and unloaded, there will be changes in the height of the legs. Also need to adjust at any time.
5. The operation begins.
6. At the end of the operation, loosen the fixed chain, press the handle to board the axle, the vehicle drives away, boarding the car. Bridge reset.
7. Lift the tail of the boarding bridge and hang it on the car.

Note:

1. The equipment must be loaded with no load for 3 times and the safety is correct.
2. The safety chain and safety legs must be locked before loading and unloading the goods, otherwise it is not allowed to work.
3. The mobile boarding bridge must be placed on a solid ground with a speed limit of 3KM/H when moving.

4. During the operation of the forklift, try not to eccentrically load, so as not to damage the bridge body and cause danger.
5. It is strictly forbidden to overload.
6. The hydraulic oil should be kept clean and no water or other impurities should be mixed. The hydraulic oil is changed once a year, using hydraulic oil No. 32 according to the local temperature.
7. When the boarding bridge fails, stop operation immediately and eliminate the fault.

COMMON FAULT AND ELIMINATION METHOD

Common fault	Reason	Elimination method
Platform can't lifting up	Tank is empty or short of hydraulic oil	Fill the tank up with hydraulic oil .
	Hydraulic oil go bad	Change the hydraulic oil
	Oil filter clogged	Clean the oil filter or change hydraulic oil
	Emergency bolts are not tightened	Tighten the bolts
	The pressure - regulating valve is not enough	Adjust the pressure - regulating valve
	Overload	Reduce the load, it is strictly prohibited to use overload.
Lift platform free fall	One-way valve is dirty	Remove and clean it or change a new one
	Emergency bolts are not tightened	Tighten the bolts
	Oil cylinder leakage	Replace hydraulic cylinder seals
Lifting unstable	Normally closed valve is dirty	Clean the normally closed valve
	Oil filter clogged or oil suction pipe is loose	Clean the oil filter or tighten the oil suction pipe
	Hydraulic oil go bad or short of hydraulic oil	Change the hydraulic oil or fill the tank up with hydraulic oil
	Emergency bolts are not tightened	Tighten the bolts
	Drop too fast or too slow	Adjust the falling speed control valve
	Hydraulic cylinder creeping	Replace the cylinder or seal ring

After - sales Service.

Thanks for choosing our products. We will provide technical support and service all the time.